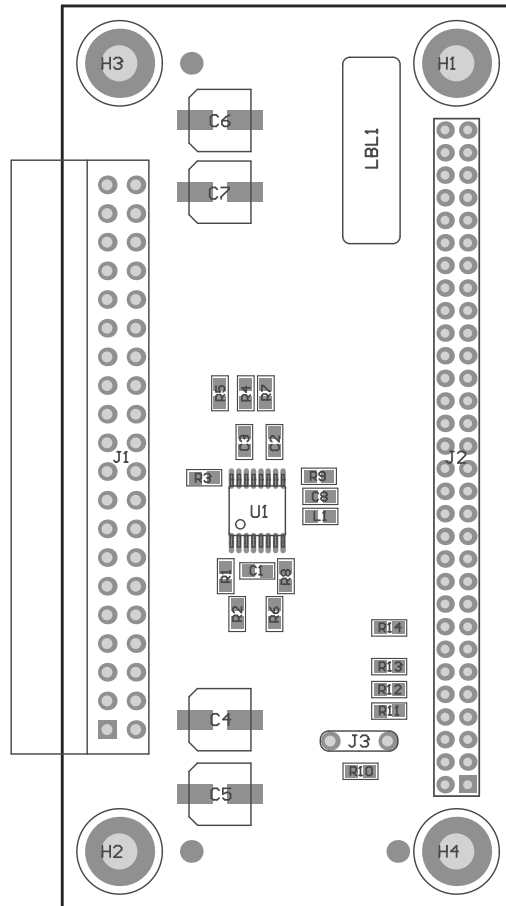
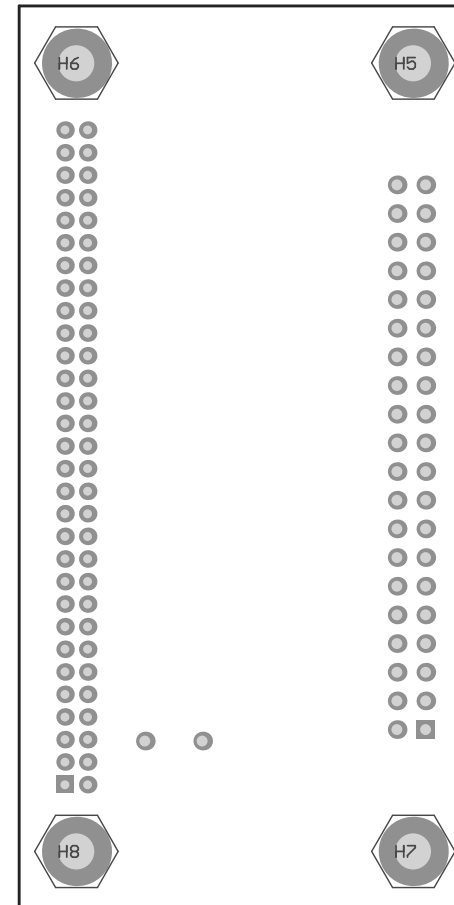


ZZ1 ■Install label in silkscreened box after final wash. Text shall be 8 pt font. Text shall be per the Label Table in the PDF schematic.  
ZZ2 ■These assemblies are ESD sensitive, ESD precautions shall be observed.  
ZZ3 ■These assemblies must be clean and free from flux and all contaminants. Use of no clean flux is not acceptable.  
ZZ4 ■These assemblies must comply with workmanship standards IPC-A-610 Class 2, unless otherwise specified.  
ZZ5 ■Connector J2 is placed on the bottom side



COMPONENTS MARKED 'DNP' SHOULD NOT BE POPULATED.  
ASSEMBLY VARIANT: [No Variations]

PCB VIEWED FROM TOP SIDE	BOARD #: TIDA-00209	REV: E1	SUN REV: Not In VersionControl
IGNORE ->			
PLOT NAME = Top Assembly Drawing	GENERATED : 1/20/2015 4:03:50 PM	TEXAS INSTRUMENTS	



COMPONENTS MARKED 'DNP' SHOULD NOT BE POPULATED.  
ASSEMBLY VARIANT: [No Variations]

PCB VIEWED FROM BOTTOM SIDE	BOARD #: TIDA-00209	REV: E1	SUN REV: Not In VersionControl
	IGNORE ->		
PLOT NAME = Bottom Assembly Drawing	GENERATED : 1/20/2015 4:03:51 PM	TEXAS INSTRUMENTS	